



For  
better  
homes.

## CUBO Product Brochure

# Your new home has arrived. ■

*Narito na ang iyong bagong tahanan.*



## Who We Are



We are a modular engineered bamboo housing designer and manufacturer. Our mission is to make dignified housing a reality for all Filipinos.

We're the first of our kind in the Philippines as we combine modular design, renewable materials, rapid manufacturing, and rapid assembly to create a truly Filipino solution for the nationwide housing problem.

### FEATURED ON



### AWARDS



2018 RICS Cities for Our Future  
Challenge Grand Winner

2019 Ani ng Dangal Recipient for  
Architecture and Allied Arts



2019 Dangal ng Lipi Recipient for  
Science and Technology



At CUBO Modular, we see a world where everyone has access to affordable and dignified housing—a world where everyone is safe from pollution, diseases, and crime inside a home they can call their own.

**We see a world where everyone can say...“I’m home.”**

*Sa CUBO Modular, pinapangarap namin ang isang mundo kung saan ang lahat ay may kakayahang mag-angkin ng marangal na pabahay sa abot-kayang halaga—isang mundo kung saan ang lahat ay ligtas sa polusyon, sakit, at krimen sa loob ng isang tahanan na matatawag nilang sarili.*

*Pinapangarap namin ang isang mundo kung saan ang lahat ay makapagsasabing... “Nakauwi na ako.”*



**Earl Forlales**

Co-founder and CEO  
CUBO Modular Inc.  
Forbes 30 Under 30 Asia

# Our Design Process



With our patent-pending CUBO® Repeatable Assemblies, you can design your home in **unlimited** ways without sacrificing speed of construction. Just follow our quick 3-step design process and you can come up with the new home of your dreams. Fill up our **Customization Form** at [www.cubo.ph/customize](http://www.cubo.ph/customize) or schedule a call via [info@cubo.ph](mailto:info@cubo.ph) so we can provide you a personalized quotation.

## 1 Pick your CUBO® Base Model

We have pre-designed two award-winning base models from which you can start to design your new home. They are our Bulacan Model and our Sarangani Model. Each one has been carefully studied and designed to fit up to four people depending on the desired configuration. If you'd like to start with a different base model, we do offer custom home design services that you can avail for a fee.

## 2 Choose your Package Option

Once you've chosen your base model, you can choose from multiple package options depending on your needs and budget. Each one was designed with its own unique appeal and atmosphere. There are three options in total, namely: Shed, Cottage, and Modern. Provided in this brochure are the corresponding specifications of each package for our pre-designed base models.

## 3 Define the features of your CUBO® Home

Finally, choose the unique features of your CUBO® Home. Decide how the exterior and interior of your house will look like, choose what finishes you want for your kitchen and bathroom fixtures, pick your own add-on elements, and so on. You are the designer of your own dream home. Once you're done, forward your form to us and we'll get back to you with your personalized quotation.

**Happy designing!**





**CUBO® Base Models**



*Floor Area: 14 sq.m.*

# Bulacan Model

*A studio-type home fully equipped with plumbing and electrical and with enough space for a dining table for two, two twin-sized beds, a kitchen, and a bathroom.*





**CUBO® Base Models**

*Floor Area: 28 sq.m.*

# Sarangani Model

*A one-bedroom home fully equipped with plumbing and electrical and with enough space for a living area, a dining table for four, a full-sized bed, two twin-sized beds, a kitchen, and a bathroom.*



## Package Options



Shed



## Package Options



# Cottage



## Package Options



**Modern**





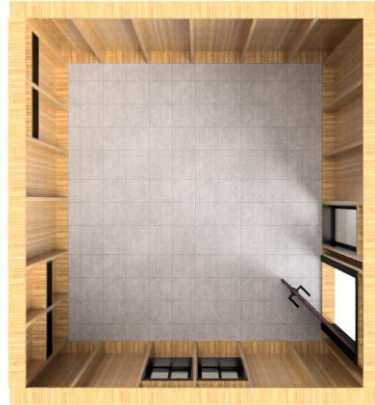
# Package Specifications

## CUBO® Bulacan Model

A studio-type home fully equipped with plumbing and electrical and with enough space for a dining table for two, two twin-sized beds, a kitchen, and a bathroom.

Floor Area: **14 square meters**

Floor Dimensions: **3.60 x 3.90 meters**



**Shed**



**Cottage**



**Modern**

Engineered Bamboo Floor Panels	Not included	Included	Included
Engineered Bamboo Wall Panels	Single-sided Wall	Single-sided Wall	Double-sided Wall
Engineered Bamboo Ceiling Panels	Not included	Not included	Included
Engineered Bamboo Roof Panels	Included	Included	Included
Plumbing and Electrical Wiring	Included as per house plan	Included as per house plan	Included as per house plan
Electrical Outlets	Included as per house plan	Included as per house plan	Included as per house plan
Light Fixtures and Switches	Included as per house plan	Included as per house plan	Included as per house plan
Doors	1 pc included	2 pcs included	2 pcs included
Standard Windows	2 pcs included	2 pcs included	2 pcs included
Short Windows	2 pcs included	2 pcs included	2 pcs included
Short Windows with Exhaust Fan	2 pcs included	2 pcs included	2 pcs included
Tall Windows	1 pc included	1 pc included	1 pc included
Bathroom Module and Fixtures	Not included	1 set included	1 set included
Kitchen Module and Fixtures	Not included	1 set included	1 set included

**Starts at**  
**Php 10,000 per sq.m.**

**Starts at**  
**Php 18,000 per sq.m.**

**Starts at**  
**Php 25,000 per sq.m.**



# Package Specifications

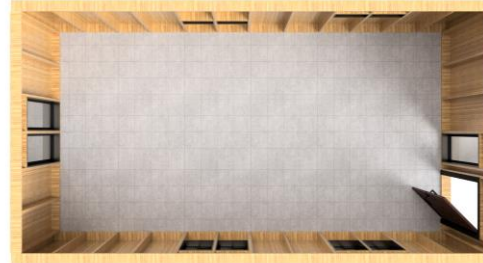


## CUBO® Sarangani Model

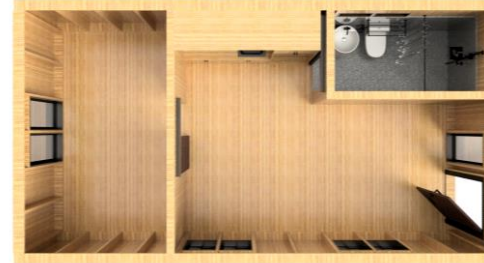
A one-bedroom home fully equipped with plumbing and electrical and with enough space for a living area, a dining table for four, a full-sized bed, two twin-sized beds, a kitchen, and a bathroom.

Floor Area: **28 square meters**

Floor Dimensions: **3.60 x 7.80 meters**



**Shed**



**Cottage**



**Modern**

Engineered Bamboo Floor Panels	Not included	Included	Included
Engineered Bamboo Wall Panels	Single-sided Wall	Single-sided Wall	Double-sided Wall
Engineered Bamboo Ceiling Panels	Not included	Not included	Included
Engineered Bamboo Roof Panels	Included	Included	Included
Plumbing and Electrical Wiring	Included as per house plan	Included as per house plan	Included as per house plan
Electrical Outlets	Included as per house plan	Included as per house plan	Included as per house plan
Light Fixtures and Switches	Included as per house plan	Included as per house plan	Included as per house plan
Doors	1 pc included	3 pcs included	3 pcs included
Standard Windows	4 pcs included	4 pcs included	4 pcs included
Short Windows	2 pcs included	2 pcs included	2 pcs included
Short Windows with Exhaust Fan	2 pcs included	2 pcs included	2 pcs included
Tall Windows	3 pcs included	3 pcs included	3 pcs included
Bathroom Module and Fixtures	Not included	1 set included	1 set included
Kitchen Module and Fixtures	Not included	1 set included	1 set included

**Starts at**  
**Php 10,000 per sq.m.**

**Starts at**  
**Php 18,000 per sq.m.**

**Starts at**  
**Php 25,000 per sq.m.**

# Customizable Features



## Design your CUBO® Home

### Ceiling



**With Ceiling**



**Without Ceiling**

### Roof Type



**Flat Roof**



**Mono-pitched Roof**



**Dual-pitched Roof**

### Exterior Bamboo



**Natural Bamboo**



**Dark Bamboo**

### Exterior Flashings



**Matte Black Finished Metal**



**Chrome Finished Metal**

### Interior Bamboo Trims



**Natural Bamboo**



**Dark Bamboo**

### Interior Accessories



**Matte Black Finished Metal**



**Chrome Finished Metal**



**Chrome Finished Plastic**

### Bathroom Fixtures



**Matte Black Finished Metal**



**Chrome Finished Metal**



**Chrome Finished Plastic**

### Kitchen Fixtures



**Matte Black Finished Metal**



**Chrome Finished Metal**



**Chrome Finished Plastic**



# Available Add-ons and Services

## Add-ons

- Porch or Deck
- Additional Window Panels
- Additional Door Panels
- Air-conditioning Unit Wall Panels
- Half Wall Panels
- Exhaust Fan Ceiling Panels
- Bamboo Window Blinds
- Shower Water Heater
- Small Kitchen Appliances
- Solar Roof Panels
- Custom-fitted Steps and Handrails

## Services

- Custom CUBO® Home Design
- Custom Furniture Design
- Floor Plan Reconfiguration
- Panel Customization
- CUBO® Home Assembly
- Furniture Installation





# Inside Tour

## Sample Configuration Shown

Base Model	<b>Bulacan Model</b>
Package	<b>Modern</b>
Ceiling	<b>With Ceiling Panels</b>
Roof Type	<b>Shed</b>
Exterior Bamboo	<b>Natural Bamboo</b>
Exterior Flashings	<b>Matte Black Finished Metal</b>
Interior Bamboo Trims	<b>Dark Bamboo</b>
Interior Accessories	<b>Matte Black Finished Metal</b>
Bathroom Fixtures	<b>Matte Black Finished Metal</b>
Kitchen Fixtures	<b>Matte Black Finished Metal</b>
Add-ons	<b>Porch, Dining Table for Two, Bunk Bed, Steps</b>

Interior Floor Plan







**Bathroom Module with Complete Fixtures**



**Kitchen Module with Fixtures**



**Dining Room with Table for Two**



**Custom-fitted Twin-sized Bunk Bed with Cushion and Storage**





View of Home from Entry Area



# Inside Tour



## Sample Configuration Shown

Base Model	Sarangani Model
Package	Modern
Ceiling	With Ceiling Panels
Roof Type	Shed
Exterior Bamboo	Natural Bamboo
Exterior Flashings	Matte Black Finished Metal
Interior Bamboo Trims	Dark Bamboo
Interior Accessories	Matte Black Finished Metal
Bathroom Fixtures	Matte Black Finished Metal
Kitchen Fixtures	Matte Black Finished Metal
Add-ons	Porch, Sofa, Wall-mounted Shelves, Dining Table for Four, Bunk Bed, Full Bed

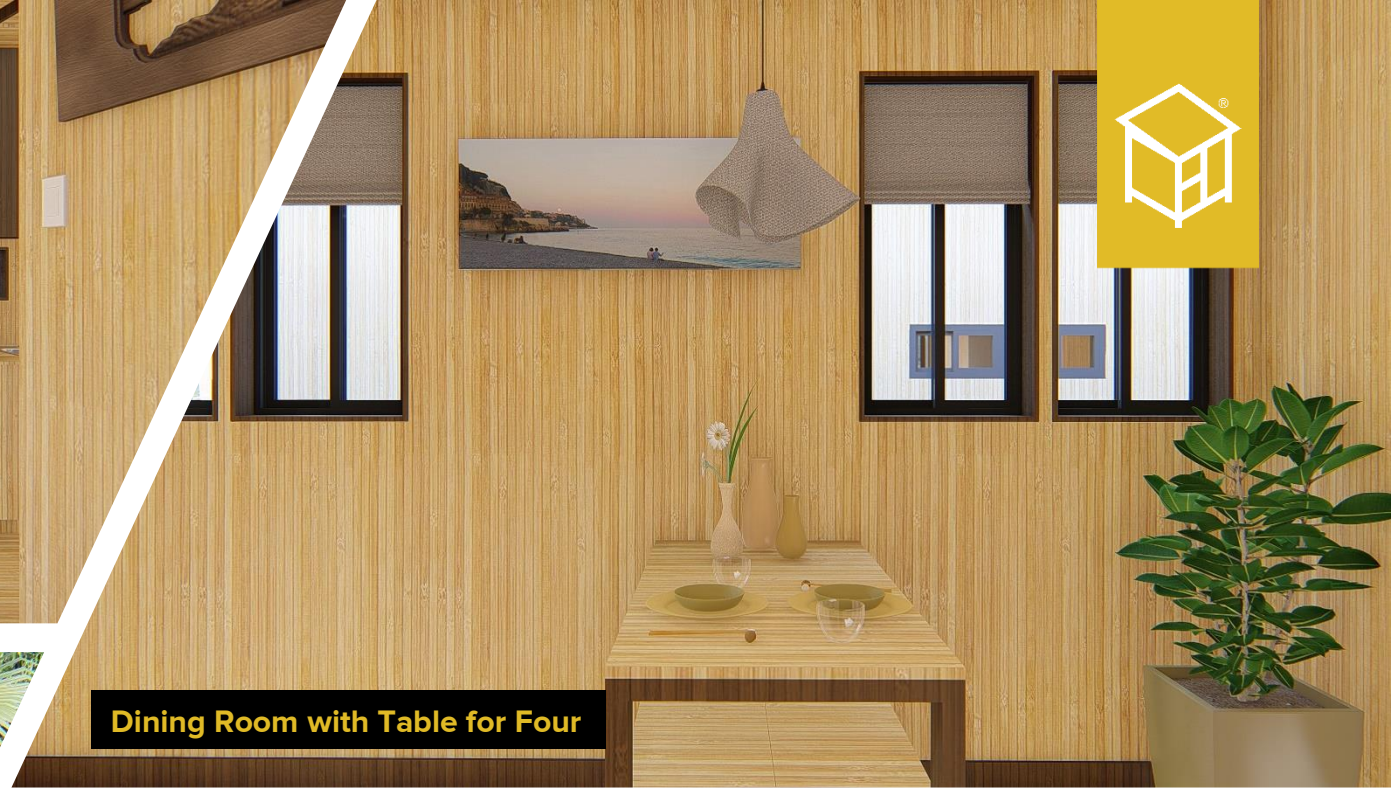
### Interior Floor Plan







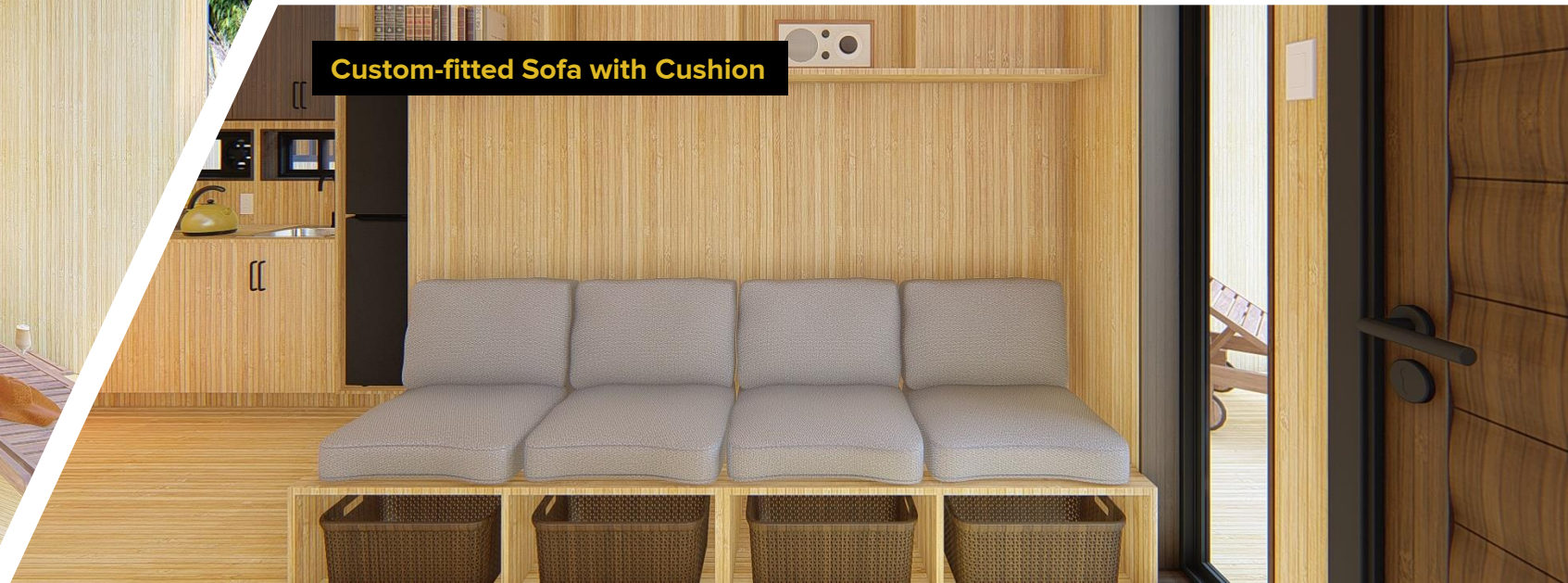
**Custom-fitted Twin-sized Bunk Bed with Cushion and Storage**



**Dining Room with Table for Four**



**2.4-meter Deep Porch**



**Custom-fitted Sofa with Cushion**

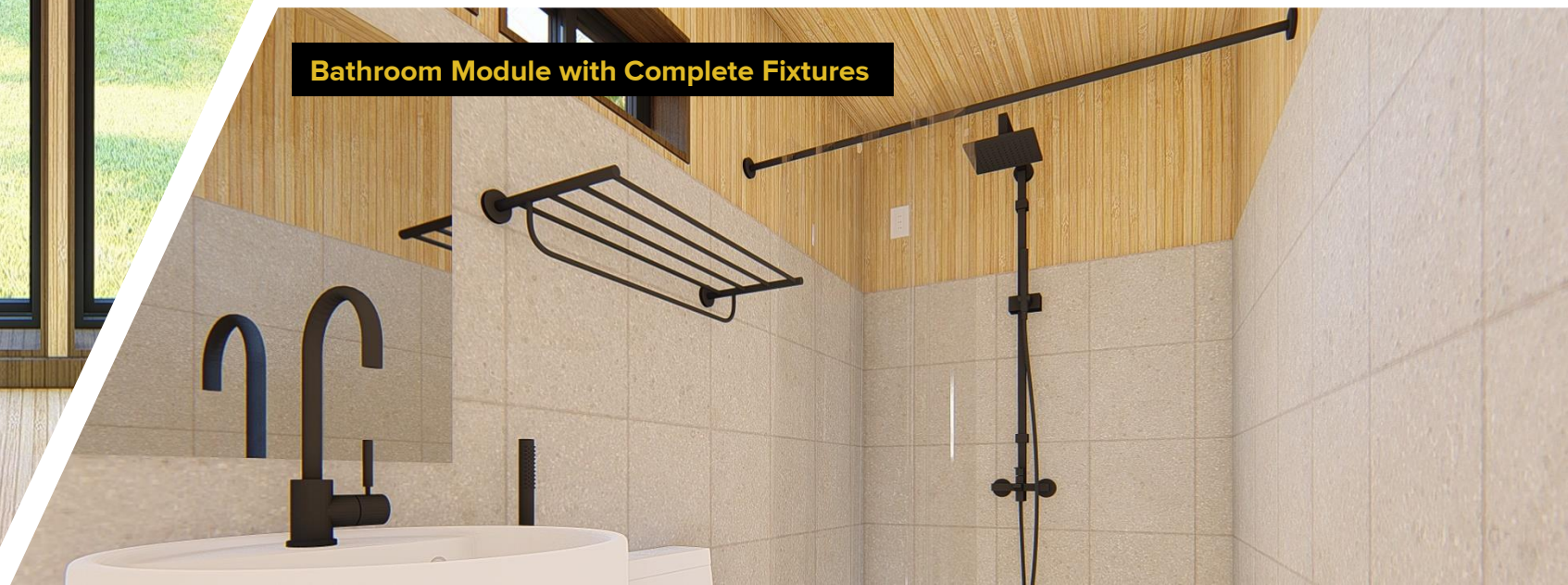




**Custom-fitted Full-sized Bed with Cushion and Storage**



**Kitchen Module with Fixtures**



**Bathroom Module with Complete Fixtures**







View of Home from Entry Area



# Standard Inclusions

## General

- One (1) free floor plan customization and features selection appointment
- Guaranteed fixed-price contract for a worry-free project from order to delivery
- Guaranteed six-month lead time from order to delivery to keep you on schedule (faster lead time if stock is available)
- End of assembly house cleaning and site waste collection for a comfortable move-in (if assembled by CUBO Modular Inc.)
- CUBO® six-month new home guarantee for complete peace of mind
- Construction drawings and specifications for fast permitting

## Structural

- Termite-resistant engineered bamboo wall frames for standard 2.4-meter high ceiling upstairs and downstairs
- Termite-resistant engineered bamboo floor frames for sturdy, squeak-proof floors upstairs and downstairs
- Termite-resistant engineered bamboo trusses for a robust flat, mono-pitched or dual-pitched roof structure
- International code-compliant hurricane and seismic ties on foundation, walls, and roof to resist winds, floodwaters, and tremors

## Exterior

- Termite-resistant engineered bamboo siding with thick protective coating for a waterproof exterior finish
- Termite-resistant engineered bamboo porch or deck with thick protective coating for a waterproof exterior finish
- Polymer-lined waterproof engineered bamboo subflooring for increased water protection
- Painted steel exterior flashings, gutter, and downspouts for effective water control
- Black uPVC sliding windows with screen to keep mosquitoes and pests out
- Black uPVC fixed floor-to-ceiling windows to let natural light in
- Modern solid wood hinged entry doors for increased security
- Impact-resistant keyed lever set and single cylinder deadbolt for maximum security at all entry doors
- Wall-mounted security lights at all exterior doors
- Corrosion-resistant stone-coated roofing for long-term resistance against environmental extremes





# Standard Inclusions

## Utilities

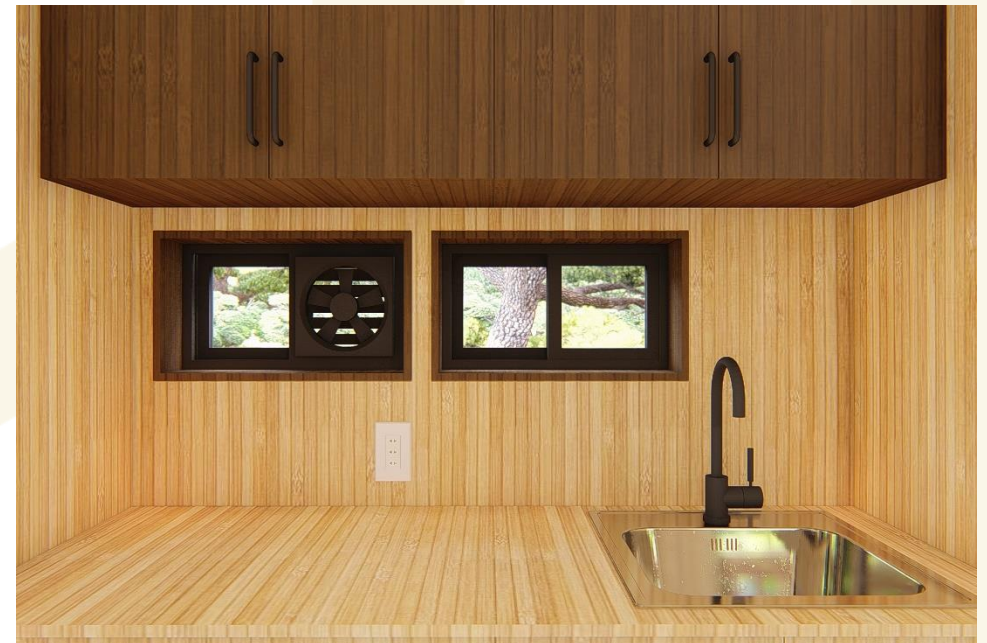
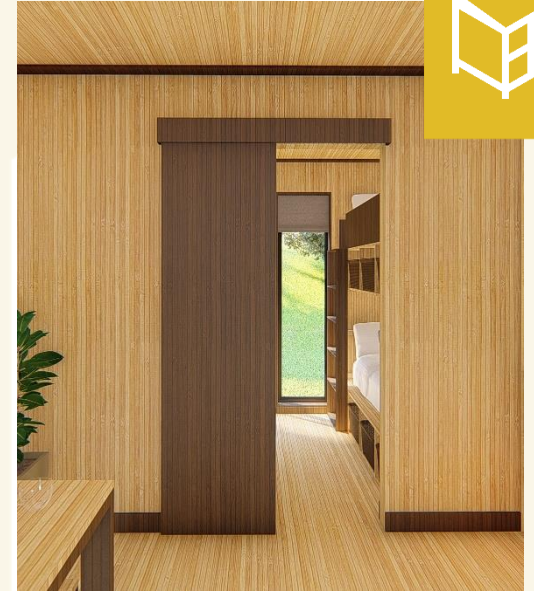
- Code-compliant electrical boxes, conduits, and wiring for safe access to electricity
- Code-compliant pipes and fittings for worry-free water access
- Industry-standard electrical panel, switches, and outlets with built-in protective features for guaranteed safety
- Long-lasting LED lighting for ample illumination and maximum energy savings

## Interior

- Engineered bamboo flooring, interior wall, and ceiling for a complete bamboo aesthetic
- Modern solid wood sliding interior doors for effective soundproofing and space-saving
- Engineered bamboo trims, baseboard, and crown molding for a modern interior look
- Modern recessed or pendant light fixtures for bright room illumination
- Matching cabinet and door handle package for a harmonious and cohesive interior

## Kitchen

- Modular engineered bamboo cupboards, cabinets, and drawers for maximum kitchen storage
- Engineered bamboo countertop with thick protective coating for a waterproof finish
- Refrigerator enclosure for a wide range of fridge sizes
- Deep storage cabinet over refrigerator for additional supply storage
- Stainless steel kitchen sink for easy maintenance and maximum stain resistance
- Multifunction kitchen organizer for a tidy cooking workspace
- Matte black or chrome finished stainless steel single-lever faucet for long-term durability
- Wall-mounted exhaust fan for effective ventilation and odor control
- Conveniently located GFCI-protected outlet for small kitchen appliances





# Standard Inclusions



## Bathroom

- Conveniently located soap and toilet paper holder in matte black or chrome finish
- Conveniently located towel rack and bathroom shelf in matte black or chrome finish
- Conveniently located face towel holder in matte black or chrome finish
- Matte black or chrome finished brass shower set for multiple bathing options
- Brass angle valves in matte black or chrome finish for easy and worry-free access to water supply
- Matte black or chrome finished brass floor drain for extended use
- Matte black or chrome finished stainless steel bathroom faucet and bidet sprayer for increased durability and corrosion resistance
- Ceramic 30 cm x 30 cm tile flooring and backsplash for optimum waterproofing
- Matte black or chrome finished sliding door handle and lock to ensure privacy
- Matte black or chrome finished shower curtain rod for effective splash containment (in some models only)
- Ceramic pedestal basin for a neat and clutter-free bathroom
- Ceramic one-piece toilet with water tank and soft-closing seat and cover
- Large 18 x 24 inch bathroom mirror for increased visibility
- Wall-mounted exhaust fan for effective ventilation and odor control
- Conveniently located GFCI-protected outlet for water heater





## Not Included

### Site Costs

- Acquisition of building permits required to begin construction
- Construction of concrete foundation or any foundation material of choice
- Setting up of connection from an existing septic tank to the house
- Setting up of connection from an existing sewer or drainage line to the house
- Setting up of connection from an existing water line or water meter to the house
- Setting up of connection from a standard single phase electrical line to the house
- On-site assembly of CUBO® Home (available as a service)





# Deliveries begin in April 2020.

*Ihahatid simula sa Abril 2020.*



**Reserve your CUBO® Home today.**

Fill up your Customization Form online at [www.cubo.ph/customize](http://www.cubo.ph/customize) or schedule a call for your personalized quotation.

**We deliver NATIONWIDE.**

Website: **www.cubo.ph**

Email: **info@cubo.ph**

Facebook: **CUBO Modular**

This brochure is a publication of CUBO Modular Inc. All product house specifications, features, illustrations, and equipment shown in this brochure are based on the latest available information at the time of publication. CUBO Modular Inc. reserves the right to make modifications and changes, without notice or obligation, in prices, specifications, colors, materials, and available features and options. CUBO house models are shown with options that may be available at extra cost, or may not be available at the time you order your house. All images contained in this brochure are owned by CUBO Modular Inc. or are used under a valid license. It is a breach of the right of CUBO Modular Inc. and other third parties to reproduce these images without expressed written permission from CUBO Modular Inc. CUBO Modular logos and slogans, emblems, house model names, house model designs, and other CUBO marks appearing in this brochure are trademarks and/or service marks of CUBO Modular Inc. All models and photography are for illustration purposes only.

