



CUBO Modular Inc.

79 General Luis St., Bagbaguin
1440 Valenzuela City, Philippines
Facebook: CUBO Modular
Website: www.cubo.ph
Email: info@cubo.ph

PRODUCT SPECIFICATIONS

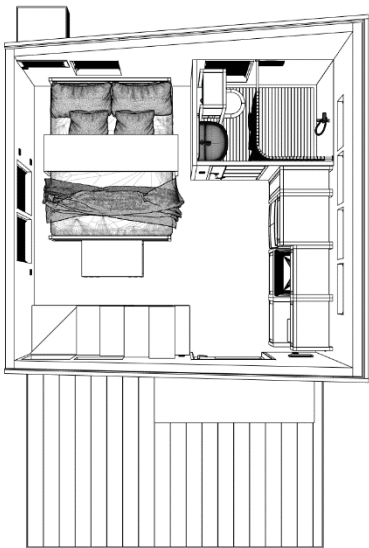
Bulacan Standard

Version: 07.01.20





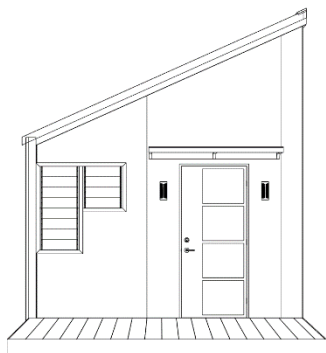
Floorplan and Pricing



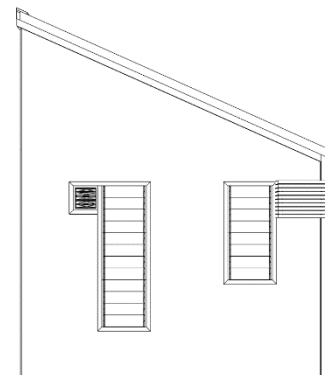
Base Package **PHP 279,000**
Total Livable Space **24 sq.m.**
Estimated Assembly Time **4.5 hours with 5 assemblers**
Structural Warranty **50 years**

Gross Indoor Area	14.5 sq.m.
Indoor Dimensions	3.90 mL x 3.70 mW
Gross Loft Area	-
Loft Dimensions	-
Gross Outdoor Area	9.5 sq.m.
Outdoor Dimensions	3.90 mL x 2.45 mW
Bathroom	1
Bedroom	Studio
Kitchen Counter	1.8 m
Recommended Lot Area	67 sq.m.
Recommended Lot Dimensions	9.70 mL x 6.90 mW
Estimated Septic Tank Cost	PHP 40,000
Estimated Foundation Cost	PHP 36,250

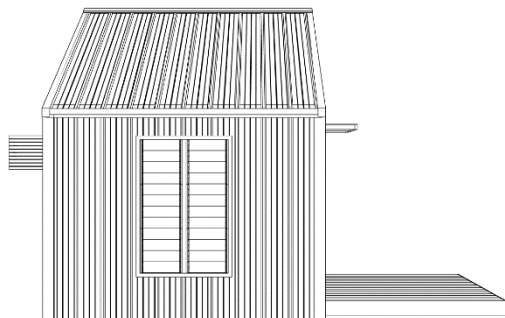
Elevations



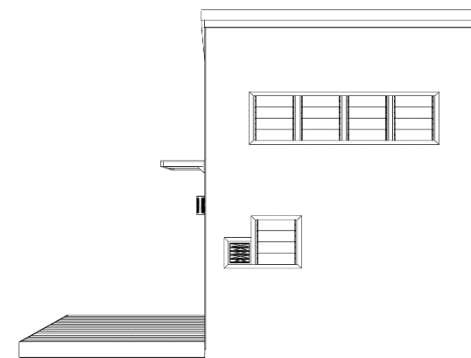
FRONT ELEVATION



REAR ELEVATION



LEFT SIDE ELEVATION



RIGHT SIDE ELEVATION



CUBO®





Standard Inclusions

All these features come standard with your CUBO Home to help you create a space that will last for decades.

GENERAL	
Sales Contract	Guaranteed Fixed Price Sales Contract of CUBO House Kit
Warranty	50-year Lifetime Structural Warranty
Engineering Drawings	Complete Engineering Drawings for Building Permit Application
Accessories	CUBO Keychain for House Keys and Logo Plate for Exterior Wall
STRUCTURE	
Floor Framing	Treated and Termite-proof Engineered Bamboo Timber
Subflooring	Polymer-lined Engineered Bamboo Structural Sheathing
Flooring	Treated and Termite-proof Engineered Bamboo Structural Board with 200 mm Grooves and Abrasion-resistant Waterproof Coating (Choice of 5 Colors)
Wall Framing	Treated and Termite-proof Engineered Bamboo Timber
Front Wall Siding	Treated and Termite-proof Engineered Bamboo Structural Board with 200 mm Grooves and Abrasion-resistant Waterproof Coating (Choice of 9 Colors)
Rear Wall Siding	Treated and Termite-proof Engineered Bamboo Structural Board with 200 mm Grooves and Abrasion-resistant Waterproof Coating (Choice of 9 Colors)
Left Side Wall Siding	Stone-coated or Painted Heavy Duty Steel Ribbed Panels (Choice of 14 Colors)
Right Side Wall Siding	Treated and Termite-proof Engineered Bamboo Structural Board with 200 mm Grooves and Abrasion-resistant Waterproof Coating (Choice of 9 Colors)
Interior Wall Siding	Treated and Termite-proof Engineered Bamboo Structural Board with 200 mm Grooves and Abrasion-resistant Waterproof Coating (Choice of 5 Colors)
Bathroom Wall Siding	Treated and Termite-proof Engineered Bamboo Structural Board with 200 mm Grooves and Abrasion-resistant Waterproof Coating (Choice of 5 Colors)
Roof Framing	Treated and Termite-proof Engineered Bamboo Timber
Ceiling	Treated and Termite-proof Engineered Bamboo Structural Board with 200 mm Grooves and Abrasion-resistant Waterproof Coating (Choice of 5 Colors)
Roof Cladding	Stone-coated or Painted Heavy Duty Steel Ribbed Panels (Choice of 14 Colors)
Front Door Canopy Framing	Treated and Termite-proof Engineered Bamboo Timber
Front Door Canopy Cladding	Stone-coated or Painted Heavy Duty Steel Ribbed Panels (Choice of 14 Colors) or Solid Polycarbonate Panels (Choice of 2 Colors)
Aircon Bracket	Treated and Termite-proof Engineered Bamboo Timber
Bracing	Galvanized Steel Typhoon and Earthquake Strap System Designed for High Wind Zones
OPENINGS	
Front Door	900 mmW x 2100 mmH x 40 mmT Solid Kiln-dried Mahogany Door (Choice of 8 Designs)
Front Door Lever	Steel or Brass Door Lever and Deadbolt Combo (Choice of 2 Finishes)
Front Door Hinges	Heavy Duty Steel Ball Bearing Hinges (Choice of 2 Finishes)
Bathroom Door	600 mmW x 2100 mmH x 40 mmT Solid Kiln-dried Mahogany Door (Choice of 8 Designs)
Bathroom Door Lever	Steel or Brass Privacy Door Lever (Choice of 2 Finishes)
Bathroom Door Hinges	Heavy Duty Steel Ball Bearing Hinges (Choice of 2 Finishes)
Front Wall Windows	1 Set/s of 550 mmL x 580 mmH Powder-coated Aluminum Louver Window (Choice of 7 Blades)
	1 Set/s of 550 mmL x 1160 mmH Powder-coated Aluminum Louver Window (Choice of 7 Blades)
Rear Wall Windows	1 Set/s of 550 mmL x 1740 mmH Powder-coated Aluminum Louver Window (Choice of 7 Blades)
	1 Set/s of 550 mmL x 1160 mmH Powder-coated Aluminum Louver Window (Choice of 7 Blades)
Left Side Wall Windows	2 Set/s of 550 mmL x 1740 mmH Powder-coated Aluminum Louver Window (Choice of 7 Blades)
Right Side Wall Windows	5 Set/s of 550 mmL x 580 mmH Powder-coated Aluminum Louver Window (Choice of 7 Blades)
Aircon Cutout	1 Set/s 480 mmL x 380 mmH Aircon Cutout
UTILITIES	



Electrical Panel	1 Set/s Royu Flush-mounted Panel Box
Switches	2 Set/s Royu Plano Series Switch (Choice of 3 Colors)
Electrical Outlets	7 Set/s Royu Plano Series Duplex Universal Outlet w/ Ground and Shutter (Choice of 3 Colors)
Aircon Outlets	1 Set/s Royu Plano Series 1-Gang 20A Aircon Outlet (Choice of 3 Colors)
Exhaust Fans	2 Set/s Royu Wall-mounted 6 in. Exhaust Fan
Front Door Lighting	2 Set/s Firefly Outdoor Wall Lamp Fixture (Choice of 2 Colors)
Interior Lighting	2 Set/s Firefly T5 Batten (Choice of 2 Colors)
	1 Set/s 600 mmL x 600 mmW x 500 mmH Handmade Rattan Basket Pendant
	1 Set/s Firefly Recessed Slim Downlight (Choice of 2 Colors)
Electrical Conduit System	uPVC Heavy Duty Fire Retardant Rigid Electrical Conduits
Potable Water Piping System	PPR Hot- and Cold-Water Pipes and Fittings
Sanitary Piping System	uPVC Drain, Waste and Vent Sanitary Pipes and Fittings
KITCHEN	
Base Cabinet	1 Set/s 600 mmL x 600 mmD x 900 mmH Engineered Bamboo Kitchen Sink Base Shelf
Kitchen Sink	1 Set/s 570 mmL x 450 mmW x 180 mmD Steel Kitchen Sink
Kitchen Faucet	1 Set/s Steel or Brass Kitchen Faucet with Single Lever Handle (Choice of 2 Finishes)
BATHROOM	
Basin	1 Set/s 470 mmL x 410 mmD x 810 mmH Pedestal Basin
Basin Faucet	1 Set/s Steel or Brass Basin Faucet with Single Lever Handle (Choice of 2 Finishes)
Toilet	1 Set/s 360 mmL x 620 mmD x 690 mmH One-piece Flushing Toilet with Soft-closing Seat and Cover
Shower	1 Set/s Steel or Brass Handheld Shower with Single Knob Handle (Choice of 2 Finishes)
Mirror	1 Set/s 550 mmL x 900 mmH Mirror with LED Lights
Shower Curtain Rail	1 Set/s Steel or Brass Curtain Rail (Choice of 2 Finishes)
Shower Curtain	1 Set/s Plastic Shower Curtain
OUTDOOR SPACE	
Deck Framing	Treated and Termite-proof Engineered Bamboo Timber
Decking	200 mmW Treated and Termite-proof Engineered Bamboo Structural Board with Abrasion-resistant Waterproof Coating (Choice of 5 Colors)

*Standard inclusions are subject to change without prior notice due to availability of stock from third-party suppliers especially during this COVID-19 pandemic. In instances where items must be substituted, only items of similar quality and value will be used.



Exclusions

The following services are available through third-party companies to be provided either by CUBO or by you.

PERMITS AND SITE DEVELOPMENT COSTS
Application and Acquisition of Building Permit and Other Local Certifications
Clearing of Site and Excavation for Foundation and Septic Tank
Design and Construction of Septic Tank
Design and Construction of Concrete Foundation
Setting-up of Connection to Existing Water and Electricity Line
OTHER COSTS
Handling and Shipping of House Kit to the Assembly Site
Customs Duties and Other Taxes (for International Deliveries)
Assembly Labor Costs



Available Upgrades

These tailored upgrades fit seamlessly into your CUBO Home to help you make the most out of your space.

Porch Upgrade **+PHP 18,000**
Gross Outdoor Area **9.5 sq.m.**
Outdoor Dimensions **3.90 mL x 2.45 mW**

STRUCTURE	
Porch Roof Framing	Treated and Termite-proof Engineered Bamboo Timber
Porch Roof Cladding	Stone-coated or Painted Heavy Duty Steel Ribbed Panels (Choice of 14 Colors) or Solid Polycarbonate Panels (Choice of 2 Colors)

CUBO Suite Furnished Upgrade **+PHP 160,000**

FURNITURE	
Kitchen Furniture	2 Set/s 600 mmL x 600 mmD x 900 mmH Engineered Bamboo Base Cabinet
	2 Set/s 600 mmL x 450 mmD x 450 mmH Engineered Bamboo Wall Cabinet
	1 Set/s 600 mmL x 450 mmD x 450 mmH Engineered Bamboo Over Ref Wall Cabinet
	1 Set/s 300 mmL x 600 mmD x 2100 mmH Engineered Bamboo Kitchen Cabinet
Living Room Furniture	1 Set/s 1980 mmL x 1500 mmW x 750 mmH Engineered Bamboo Queen Bed Frame with Uratex 6 in. Queen Mattress
	1 Set/s 600 mmL x 150 mmW x 900 mmH Engineered Bamboo Shoe Rack
	1 Set/s 600 mm Handmade Round Decorative Rattan Mirror
Dining Room Furniture	1 Set/s 1650 mmL x 450 mmW x 750 mmH Engineered Bamboo Over Bed Table - Queen
	1 Set/s Engineered Bamboo 3-Piece Nesting Stool Set
Storage Furniture	1 Set/s 600 mmL x 600 mmD x 1500 mmH Engineered Bamboo 1-Cabinet 1-Drawer Wardrobe
	1 Set/s 600 mmL x 600 mmD x 900 mmH Engineered Bamboo 1-Cabinet Wardrobe
	1 Set/s 600 mmL x 600 mmD x 600 mmH Engineered Bamboo Split Steps Storage Chest
	2 Set/s 600 mmL x 300 mmD x 300 mmH Engineered Bamboo Half Step Storage Chest
Bathroom Furniture	1 Set/s 450 mmL x 300 mmD x 1800 mmH Engineered Bamboo Over Toilet Cabinet
	1 Set/s 450 mmL x 300 mmD x 600 mmH Engineered Bamboo Under Basin Cabinet
APPLIANCES	
Kitchen Appliances	1 Set/s Hanabishi Single Ceramic Cooker
	1 Set/s LG 7.0 kg Top Load Washing Machine
	1 Set/s LG 7.2 cu.ft. Two-Door Refrigerator
	1 Set/s LG 1.0 HP Window-type Air Conditioner



CUBO Starter Furnished Upgrade **+PHP 120,000**

FURNITURE	
Kitchen Furniture	1 Set/s 600 mmL x 600 mmD x 900 mmH Engineered Bamboo Base Shelf
	2 Set/s 600 mmL x 450 mmD x 450 mmH Engineered Bamboo Wall Shelf
	1 Set/s 600 mmL x 450 mmD x 450 mmH Engineered Bamboo Over Ref Wall Shelf
	1 Set/s 300 mmL x 600 mmD x 2100 mmH Engineered Bamboo Kitchen Cabinet
Living Room Furniture	1 Set/s 1980 mmL x 1500 mmW x 750 mmH Engineered Bamboo Queen Bed Frame with Uratex 6 in. Queen Mattress
	1 Set/s 600 mmL x 150 mmW x 900 mmH Engineered Bamboo Shoe Rack
	1 Set/s 600 mm Handmade Round Decorative Rattan Mirror
Dining Room Furniture	1 Set/s 1650 mmL x 450 mmW x 750 mmH Engineered Bamboo Over Bed Table - Queen
	1 Set/s Engineered Bamboo 3-Piece Nesting Stool Set
Storage Furniture	1 Set/s 600 mmL x 600 mmD x 1500 mmH Engineered Bamboo 1-Rail 2-Shelf Wardrobe
	1 Set/s 600 mmL x 600 mmD x 900 mmH Engineered Bamboo 4-Shelf Wardrobe
	1 Set/s 600 mmL x 600 mmD x 600 mmH Engineered Bamboo Split Steps Storage Chest
	2 Set/s 600 mmL x 300 mmD x 300 mmH Engineered Bamboo Half Step Storage Chest
Bathroom Furniture	1 Set/s 450 mmL x 300 mmD x 1800 mmH Engineered Bamboo Over Toilet Shelf
	1 Set/s 450 mmL x 300 mmD x 600 mmH Engineered Bamboo Under Basin Shelf
APPLIANCES	
Kitchen Appliances	1 Set/s Hanabishi Single Ceramic Cooker
	1 Set/s Hanabishi 7.0 kg Top Load Washing Machine
	1 Set/s Hanabishi 7.5 cu.ft. Two-Door Refrigerator
	1 Set/s Hanabishi 1.0 HP Window-type Air Conditioner



Main Materials

Every CUBO house kit we make uses only top-quality materials to ensure you get a house you will be proud to call your home.

STRUCTURAL FRAMING



CUBO Engineered Bamboo

STRUCTURAL BRACING



Engineered Bamboo Timber

STRUCTURAL BRACING



Steel Typhoon and Earthquake Strap System

FLOORING, SIDING, AND CEILING



Engineered Bamboo Structural Boards

ROOFING



Stone-coated or Painted Heavy Duty Steel Roof

CONDUITS AND BOXES



Rigid Fire-retardant Conduits and Boxes

PIPES AND FITTINGS



PPR Hot- and Cold-Water Pipes and Fittings

Technical Specifications

Material Fire Rating	B2 Fire Rating
Moisture Content	8.0% \pm 2.0%
Moisture Absorption	< 0.255%
Density (kg/cu.m.)	700 to 1200
Compressive Strength (psi)	9400
Bending Strength (psi)	15600
Tensile Strength (psi)	26600
Shear Strength (psi)	1800
Board/Slab Thicknesses	8 to 38 mm
Timber Widths	38 to 150 mm
Adhesive	Phenolic Resin
Protective Coating	Polyurethane



Walkthrough

Exterior

NOTE: CUBO keychain and logo plate come standard with your house kit.





Exterior

NOTE: CUBO keychain and logo plate come standard with your house kit.





Entry

NOTE: Furniture and appliances are available separately as upgrades. See Available Upgrades section for complete details. Decorations not included.





Kitchen

NOTE: Furniture and appliances are available separately as upgrades. See Available Upgrades section for complete details. Decorations not included.





Kitchen

NOTE: Furniture and appliances are available separately as upgrades. See Available Upgrades section for complete details. Decorations not included.





Bathroom

NOTE: Furniture and appliances are available separately as upgrades. See Available Upgrades section for complete details. Decorations not included.





Bathroom

NOTE: Furniture and appliances are available separately as upgrades. See Available Upgrades section for complete details. Decorations not included.





Queen Bed

NOTE: Furniture and appliances are available separately as upgrades. See Available Upgrades section for complete details. Decorations not included.





Overbed Table

NOTE: Furniture and appliances are available separately as upgrades. See Available Upgrades section for complete details. Decorations not included.





Wardrobe

NOTE: Furniture and appliances are available separately as upgrades. See Available Upgrades section for complete details. Decorations not included.





Front Deck

NOTE: Furniture and appliances are available separately as upgrades. See Available Upgrades section for complete details. Decorations not included.





Customizable Options

You have the freedom to choose how your CUBO Home will look like. The following features of this model are available with multiple options. Please review the latest available options in your CUBO Homebuyer's Guide. Once you've selected your options, please print and fill up the attached Options Selection Form with your preferences for this model.

- **Roof and Cladding**
- **Front Door Canopy Roof**
- **Exterior Siding**
- **Flooring**
- **Interior Wall**
- **Bathroom Wall**
- **Ceiling**
- **Bathroom Fixtures**
- **Kitchen Fixtures**
- **Door Hardware**
- **Front Door**
- **Bathroom Door**
- **House Window Blades**
- **Bathroom Window Blades**
- **Switches and Outlets**
- **Lighting**

**CUBO Modular Inc.**

79 General Luis St., Bagbaguin
1440 Valenzuela City, Philippines
Facebook: CUBO Modular
Website: www.cubo.ph
Email: info@cubo.ph



OPTIONS SELECTION FORM

Version: 07.01.20

Name / Company	
Email	
Mobile Number	
Date Prepared	
House Model	Bulacan Standard
# of Units	

ROOF AND CLADDING

- ☐ **Pure Black** Stone-coated Steel
- ☐ **Charcoal Gray** Stone-coated Steel
- ☐ **Coffee Brown** Stone-coated Steel
- ☐ **Brick Red** Stone-coated Steel
- ☐ **Pine Green** Stone-coated Steel
- ☐ **Charcoal Gray** Painted Steel
- ☐ **Pure White** Painted Steel
- ☐ **Beige** Painted Steel
- ☐ **Terracotta** Painted Steel
- ☐ **Pure Brown** Painted Steel
- ☐ **Pure Red** Painted Steel
- ☐ **Mandarin Red** Painted Steel
- ☐ **Pure Blue** Painted Steel
- ☐ **Pure Green** Painted Steel

FRONT DOOR CANOPY ROOF

- ☐ **Pure Black** Stone-coated Steel
- ☐ **Charcoal Gray** Stone-coated Steel
- ☐ **Coffee Brown** Stone-coated Steel
- ☐ **Brick Red** Stone-coated Steel
- ☐ **Pine Green** Stone-coated Steel
- ☐ **Charcoal Gray** Painted Steel
- ☐ **Pure White** Painted Steel
- ☐ **Beige** Painted Steel
- ☐ **Terracotta** Painted Steel
- ☐ **Pure Brown** Painted Steel
- ☐ **Pure Red** Painted Steel
- ☐ **Mandarin Red** Painted Steel
- ☐ **Pure Blue** Painted Steel
- ☐ **Pure Green** Painted Steel
- ☐ **Clear** Solid Polycarbonate
- ☐ **Frosted** Solid Polycarbonate

EXTERIOR SIDING

- ☐ **Signature Black** Pure Engineered Bamboo
- ☐ **Signature White** Pure Engineered Bamboo
- ☐ **Industrial Black** Pure Engineered Bamboo
- ☐ **Industrial White** Pure Engineered Bamboo
- ☐ **Black** Pure Engineered Bamboo
- ☐ **Dark** Pure Engineered Bamboo
- ☐ **Honey** Pure Engineered Bamboo
- ☐ **Natural** Pure Engineered Bamboo
- ☐ **White** Pure Engineered Bamboo

FLOORING

- ☐ **Black** Pure Engineered Bamboo
- ☐ **Dark** Pure Engineered Bamboo
- ☐ **Honey** Pure Engineered Bamboo
- ☐ **Natural** Pure Engineered Bamboo
- ☐ **White** Pure Engineered Bamboo

INTERIOR WALL

- ☐ **Black** Pure Engineered Bamboo
- ☐ **Dark** Pure Engineered Bamboo
- ☐ **Honey** Pure Engineered Bamboo
- ☐ **Natural** Pure Engineered Bamboo
- ☐ **White** Pure Engineered Bamboo

BATHROOM WALL

- ☐ **Black** Pure Engineered Bamboo
- ☐ **Dark** Pure Engineered Bamboo
- ☐ **Honey** Pure Engineered Bamboo
- ☐ **Natural** Pure Engineered Bamboo
- ☐ **White** Pure Engineered Bamboo

CEILING

- ☐ **Black** Pure Engineered Bamboo
- ☐ **Dark** Pure Engineered Bamboo
- ☐ **Honey** Pure Engineered Bamboo
- ☐ **Natural** Pure Engineered Bamboo
- ☐ **White** Pure Engineered Bamboo

BATHROOM FIXTURES

- ☐ **Matte Black** Steel or Brass
- ☐ **Stainless** Steel or Brass

KITCHEN FIXTURES

- ☐ **Matte Black** Steel or Brass
- ☐ **Stainless** Steel or Brass

DOOR HARDWARE

- ☐ **Matte Black** Steel or Brass
- ☐ **Stainless** Steel or Brass

FRONT DOOR DESIGN

- ☐ **CUBO Door 1** Solid Mahogany
- ☐ **CUBO Door 2** Solid Mahogany
- ☐ **CUBO Door 3** Solid Mahogany
- ☐ **CUBO Door 4** Solid Mahogany
- ☐ **CUBO Door 5** Solid Mahogany
- ☐ **CUBO Door 6** Solid Mahogany
- ☐ **CUBO Door 7** Solid Mahogany
- ☐ **CUBO Door 8** Solid Mahogany

FRONT DOOR COLOR

- ☐ **Black**
- ☐ **Dark**
- ☐ **Honey**
- ☐ **Natural**
- ☐ **White**

BATHROOM DOOR DESIGN

- ☐ **CUBO Door 1** Solid Mahogany
- ☐ **CUBO Door 2** Solid Mahogany
- ☐ **CUBO Door 3** Solid Mahogany
- ☐ **CUBO Door 4** Solid Mahogany
- ☐ **CUBO Door 5** Solid Mahogany
- ☐ **CUBO Door 6** Solid Mahogany
- ☐ **CUBO Door 7** Solid Mahogany
- ☐ **CUBO Door 8** Solid Mahogany

BATHROOM DOOR COLOR

- ☐ **Black**
- ☐ **Dark**
- ☐ **Honey**
- ☐ **Natural**
- ☐ **White**

HOUSE WINDOW BLADES

- ☐ **Black** Pure Engineered Bamboo
- ☐ **Dark** Pure Engineered Bamboo
- ☐ **Honey** Pure Engineered Bamboo
- ☐ **Natural** Pure Engineered Bamboo
- ☐ **White** Pure Engineered Bamboo
- ☐ **Clear** Solid Polycarbonate
- ☐ **Frosted** Solid Polycarbonate

BATHROOM WINDOW BLADES

- ☐ **Black** Pure Engineered Bamboo
- ☐ **Dark** Pure Engineered Bamboo
- ☐ **Honey** Pure Engineered Bamboo
- ☐ **Natural** Pure Engineered Bamboo
- ☐ **White** Pure Engineered Bamboo
- ☐ **Clear** Solid Polycarbonate
- ☐ **Frosted** Solid Polycarbonate

SWITCHES AND OUTLETS

- ☐ **Dark Gray** Plastic with Steel Backplate
- ☐ **Dark Wood** Plastic with Steel Backplate
- ☐ **White** Plastic with Steel Backplate

LIGHTING

- ☐ **Daylight** LED
- ☐ **Warm White** LED

